

STATIC FREQUENCY CONVERTER CFTT

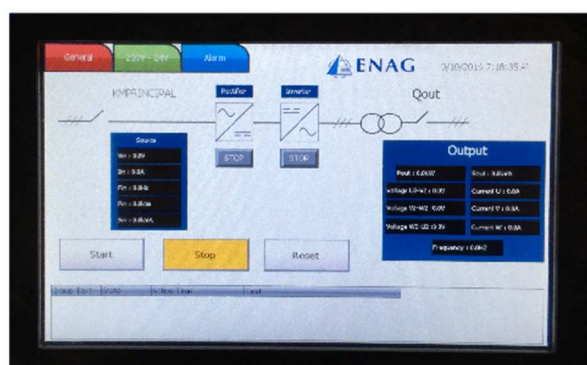
INPUT 400VAC 3PH 50HZ - OUTPUT 440V 3PH 60HZ
POWER 500KVA - SHELTER



ENAGs CFTT static converter benefits from ENAGS vast experience in energy conversion. With a new user interface making it easy to use, installation and maintenance are simplified by easy accessibility.

AVANTAGES

- These 500KVA mobile converters can supply vessels with 440VAC/60Hz from a 380 to 500VAC 3Ph/50Hz network.
- Conform STANAG 1008
- Designed for use on the quay, marine environment
- Robust, these converters can be installed on a trailer making them easy to transport if necessary.
- Large tolerance for input network variations: up to +/- 10%.



MAN MACHINE INTERFACE (MMI)

A 7-inch touch screen mounted in a cabinet on the outside of the shelter allows:

- The modification of certain system parameters (set V/f...)
- The control of certain information concerning the converter (status, alarms)

CFTT SHELTER – MAIN TECHNICAL SPECIFICATIONS

INPUT

- Voltage: from 380 to 500Vac three phase
- Tolerance: +/- 10%
- Frequency: from 47 to 63hz
- Cos Phi: 0.99
- Thdi <5%

OUTPUT

- Voltage: 440Vac three phase / Tolerance: +/- 5%
- Frequency: 60Hz / Tolerance: +/- 3%
- Thdu <5%
- Nominal current: 660A
- Max. admissible overload current: 1000A
- Neutral point: IT, neutral non distributed
- Galvanic isolation between input and output
PIM included (connectable via MMI)
- Conform to STANAG 1008
- Coupling function included (allows switching from on board network to quay network without blackout)
- Load balancing between shelters

PRESENTATION

- 10 ft steel ISO container
- Colour RAL 9010
- Dimensions:
 - Length 2,991m (not including cable rack)
 - Width 2,438 m (not including weather proof hatches)
 - Height 2,591m
- Weight: 4.5T approx (not including cables)
- Air cooling
- Input and output protected by water separators + filter G3 + watertight hatch for storage
- Container reheating and dehumidifier for long term storage
- IP 54 in operation and IP 56 in storage

PROTECTION

- Input protection by isolator switch + fuses
- Output protection via 3 pole LSI circuit breaker and motorized
- Output power connections (user) by screw terminals located in an external terminal box

CLIMATIC CONDITIONS

- Working temperature: -10 to +50°C
- Derating from 45 to 50°C of 2%/°C
- Humidity: 5 to 95°C no condensation

OPTIONS (ON REQUEST)

- Remote MMI
- Cables
- Topicalization
- Other voltages, frequencies and powers
- Transfer of MMI information to remote station
- Data-logging
- Parallelization of several shelters

