

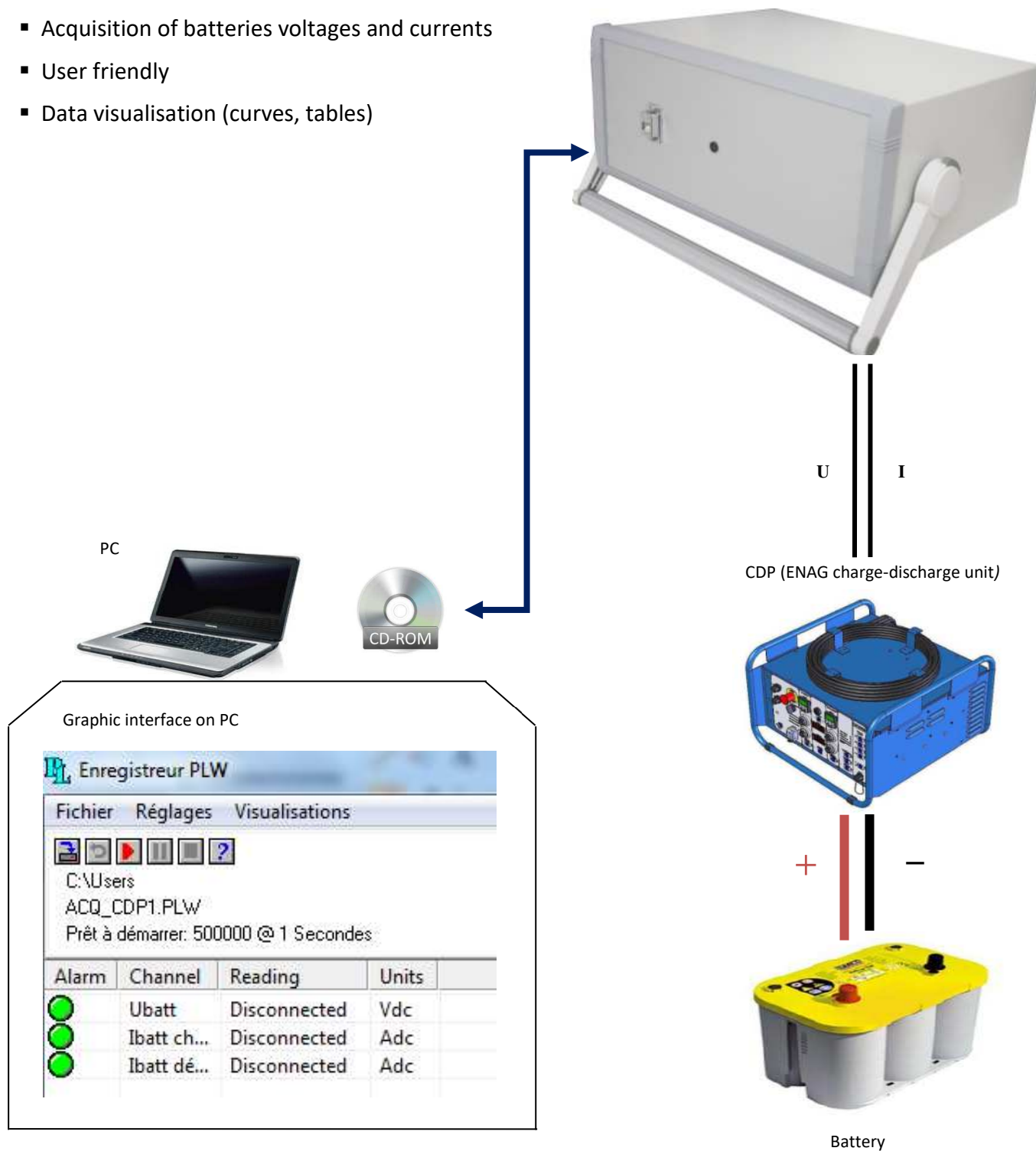
CDP ACQUISITION FOR CHARGE-DISCHARGE UNIT



ADVANTAGES

- Acquisition of batteries voltages and currents
- User friendly
- Data visualisation (curves, tables)

OPTION CDP ACQUISITION



ENAG
creative energy from a manufacturer

31 Rue Marcel Paul
ZI Kerdroniou Est
29000 QUIMPER
FRANCE

tel +33 2 98 55 51 99
fax +33 2 98 55 51 67
mail contact@enag.fr
web www.enag.fr

CDP acquisition unit – MAIN CHARACTERISTICS

INPUT

- Voltage: 230 Vac \pm 15% - single-phase
- Frequency: 50 Hz
- Max. Input current: 0.5A

COMMON CONTROL / SIGNALLING

- ON/OFF switch
- LED: in operation

PARAMETERS MEASURED AND DISPLAYED:

- For charge-discharge unit CDP 32V C80A-D50A: voltage 0 to 150V, current 0-80A
- For charge-discharge unit CDP 40V C60A-D50A: voltage 0 to 150V, current 0-80A
- For charge-discharge unit CDP 95V C30A-D26A: voltage 0 to 150V, current 0-40A
- For charge-discharge unit CDP 105V C30A-D23A: voltage 0 to 150V, current 0-40A

PRECISION

- Voltage: \pm 1%
- Current: \pm 1%

OPERATION TEMPERATURE

- +0 to +45°C Operation for the set
- Relative humidity: up to 80% without condensation

STORAGE TEMPERATURE

- 0°C to + 70°C

PROTECTION

- Input EMI filter
- Through fuses

STANDARDS

- Security: EN 60950
- EMC: EN 50091-1 / 50091-2
- Marking CE

MECHANICAL CHARACTERISTICS

DIMENSIONS

- Width = 350mm
- Depth = 260mm
- Height = 150mm
- Total weight: 4.5 Kg (with the cables)
- Protection index: IP 2X

CONNECTIONS

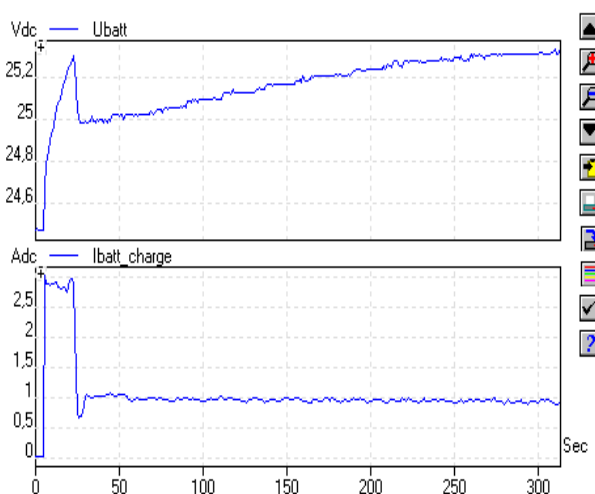
- To the mains network using the 2m IEC cable
- To the charger-discharger unit using the 10m cable
- To the PC using the 2m USB cable

KIT SUPPLIED

- Acquisition unit + cables + CD-Rom

DATA OVERVIEW

Curve



Table

Heure	Ubatt	Ibatt charge	Ibatt décharge
Secondes	(Vdc)	(Adc)	(Adc)
0	24,469	0,020	0,000
1	24,478	0,020	0,000
2	24,469	0,020	0,000
3	24,469	0,015	0,000
4	24,469	0,020	0,000
5	24,469	0,020	0,000
6	24,661	3,028	0,000
7	24,789	2,876	0,000
8	24,844	2,891	0,000
9	24,890	2,862	0,000
10	24,927	2,877	0,000